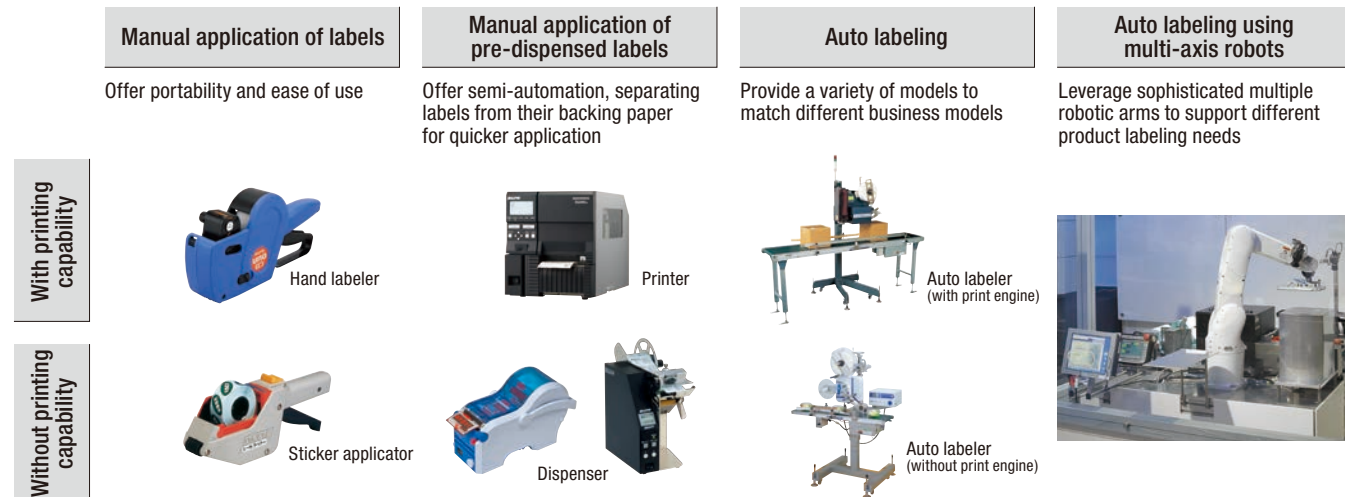
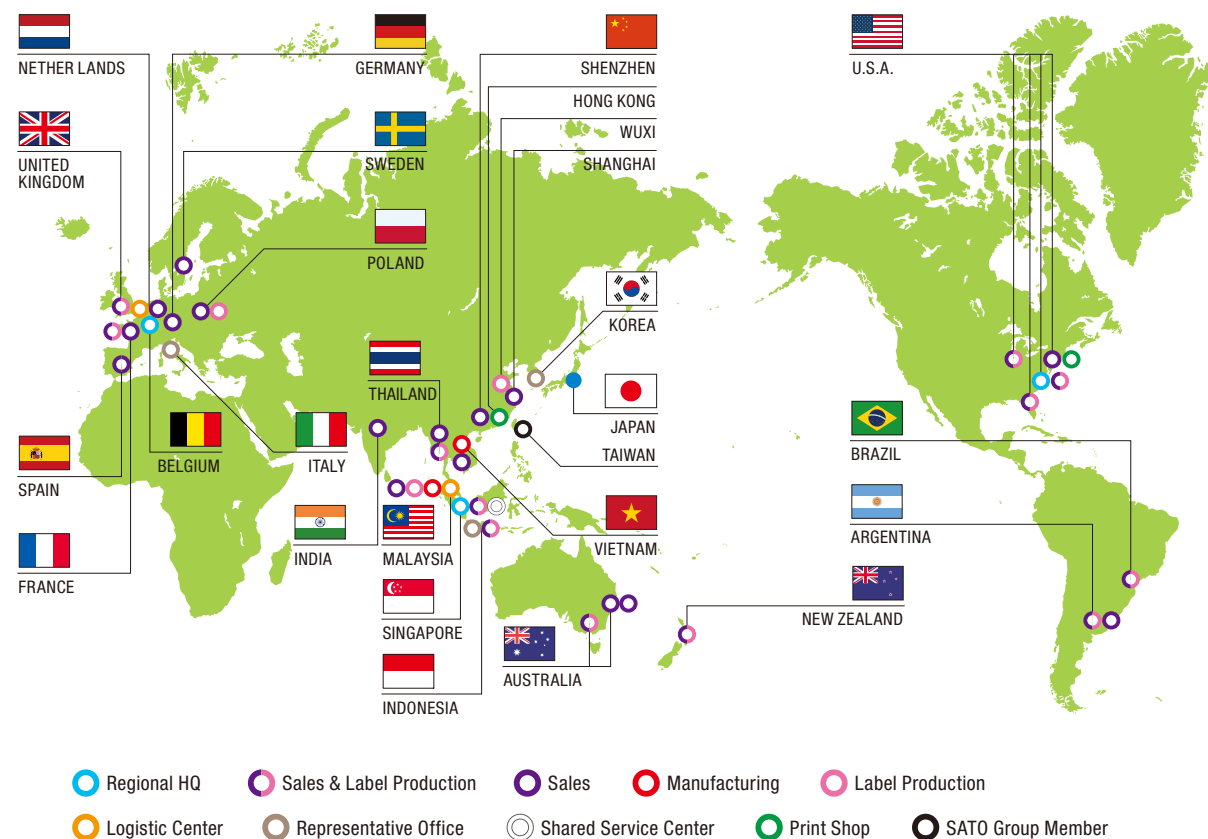


## Product Lineup for Efficient / Automatic Labeling



## Our Global Presence



# MANUFACTURING SOLUTIONS

Bringing together the best Auto-ID technologies to solve your operational challenges



## Receiving & Warehousing

**Achieve first-in-first-out stock rotation, visibility of inventory/location, and standardization of work processes**

### ●Streamline receiving process (no manual entry)

Label inbound materials with their storage locations, expiry dates, and other information encoded in barcodes/QR codes for identification.



### ●Manage inventory by location (no searching)

Enable efficient inbound and outbound warehousing operations by attaching location information to materials at receipt.



### ●Manage materials on a first-in, first-out basis

Enable the checking out of materials based on their labeled expiry date and lot number information, thereby preventing losses due to expirations.



### ●Standardize work processes

Combine wearable and speech/character recognition technologies to enable hands-free and eyes-free operations that can be performed easily even by inexperienced operators.



## Assembling, Processing & Production

**Achieve precision, labor savings and traceability through product identification**

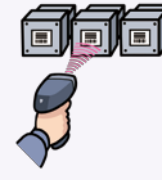
### ●Supply materials to production lines accurately

Enable the timely checking out of the right materials in the required quantities, thereby reducing wastage and human errors.



### ●Prevent errors and improve productivity

Provide the infrastructure for error-free and foolproof operations to reduce dependence on the intuition and experience of skilled workers.



### ●Operational visibility

Manage operational data centrally to enable the identification and control of bottlenecks etc. for increasing total throughput.



### ●Save labor (no redundancy)

Streamline the labeling process with auto-labelers to handle items of irregular, complex shapes that are difficult to label manually.



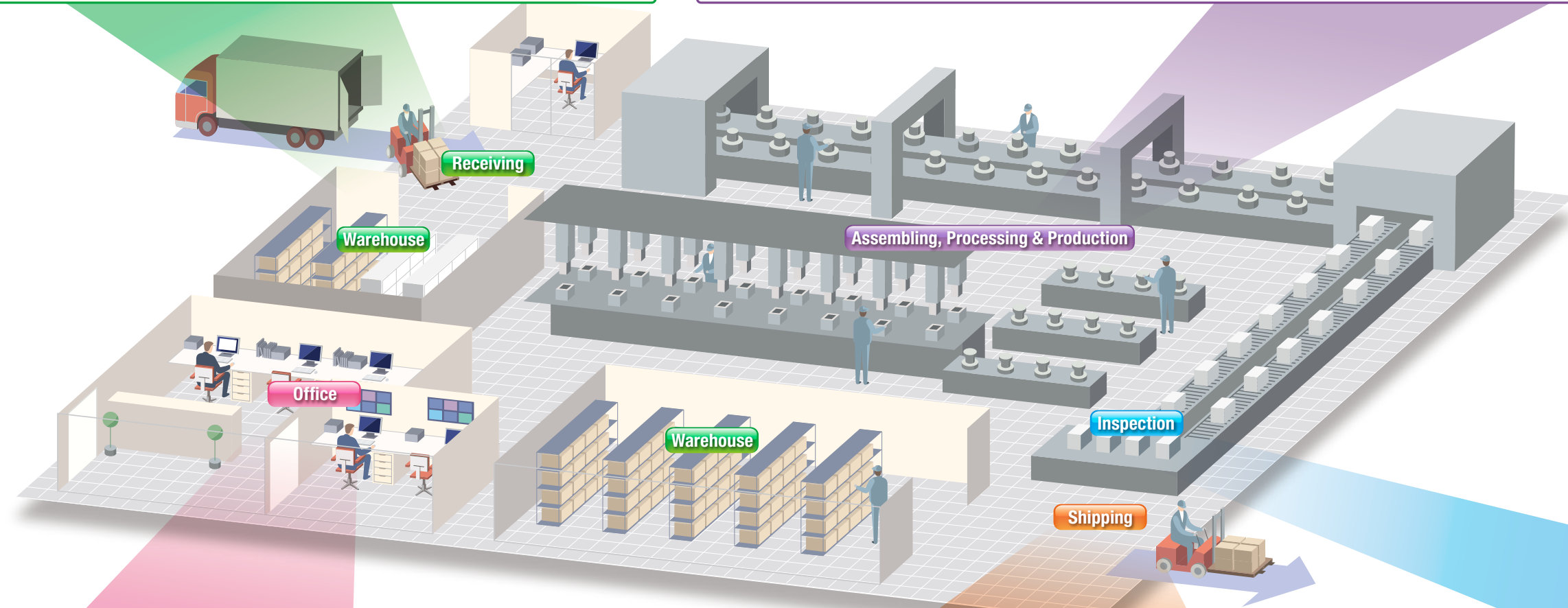
### ●Enable traceability

Support tracing back to raw materials for assurance of reliability by attaching assembly/processing data to finished products.



### ●Direct marking

Offer direct marking for products that are not suitable for label applications due to their shapes or use environments. Contact our sales teams for details.



## Office operations

**Achieve visibility of human resources and assets that are involved in the running of the production site**

### ●Control access to work areas

Control entry and exit activities of workers using RFID access cards to ensure the security and hygiene of plant operations.



### ●Track movements in work areas

Collect the real-time location data of workers using iBeacon/RFID to enable visibility and control of plant operations.



### ●Manage documents and drawings (no searching)

Save hassle and time on locating and stocktaking of documents and drawings by using Colorbit and camera image recognition.



### ●Manage production equipment

Manage the data of production equipment and their maintenance cycles to reinforce regular maintenance practices and support stable plant operations.



### ●Manage fixed assets

Use versatile methods to mark/label roll cages, material handling equipment, tools, etc. for on-site tracking and loss prevention.



### ●Prevent tampering and counterfeiting

Offer tamper-proof security labels and anti-counterfeiting printing techniques to ensure authenticity and product integrity.

## Shipping

**Achieve faster and more accurate deliveries to improve logistics quality**

### ●Prevent shipping errors

Minimize shipping errors and mix-ups using pick-to-light system and picking carts.



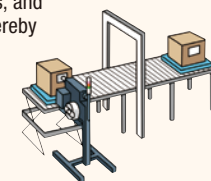
### ●Manage finished goods inventory

Manage inventory quantity and holding period to enable accurate first-in, first-out operations and efficient stocktaking.



### ●Optimization (no downtime)

Offer one-stop solutions for assigning shipping methods based on order data, printing and applying shipping labels, and collecting shipping data, thereby reducing logistics costs.



### ●Shipment tracing

Collect data on production lot numbers and their corresponding shipping destinations to trace shipment in the event of defects.



## Product Identification Solutions

### Label printers



### Color printers



### Labels



### RFID



## Support different operating and precision requirements

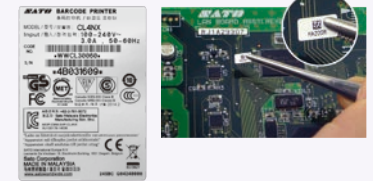
### ●Durable product identification for harsh environments

Labels that maintain their appearance/data readability for traceability even when exposed to high temperatures, chemicals, or longtime outdoor use.



### ●Nameplate labels

Labels with large amounts of information printed at high precision of  $\pm 0.3\text{mm}$  for application to small items.



## Inspection

**Support increasingly complex and advanced quality requirements**

- Automate pre-shipment inspection
- Manage test pieces/samples
- Prevent inspection oversight



### ●Automate pre-shipment inspection

Perform both label printing and verification of print quality simultaneously, which helps prevent missing/wrong parts in the production line that follows.



### ●Manage test pieces/samples

Support the classification and identification of tested samples.

